

# WAT-902HB2S

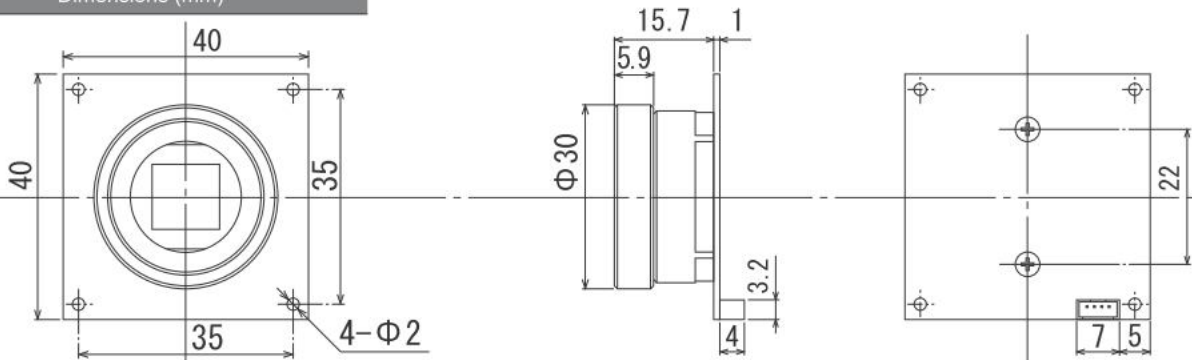
## 1/2" Board Camera Unit B/W · Super High Sensitivity



**Key features:** ● Minimum illumination 0.0003lx, F1.4 ● 1/2" ● DC12V ● Near IR sensitivity

Model (Type)	WAT-902HB2S (EIA)	WAT-902HB2S (CCIR)
Pick-up element	1/2-inch interline transfer CCD image sensor	
Number of total pixels	811(H) × 508(V)	795(H) × 596(V)
Number of effective pixels	768(H) × 494(V)	752(H) × 582(V)
Unit cell size	8.4 μm(H) × 9.8 μm(V)	8.6 μm(H) × 8.3 μm(V)
Synchronizing system	Internal	
Scanning system	2:1 interlace	
Video output	Composite 1Vp-p 75 Ω (Unbalanced)	
Resolution (H)	570TVL (Center)	
Minimum illumination	0.0003lx, F1.4	
S/N	≥50dB	
Electronic iris	1/60~1/100,000 (sec.)	1/50~1/100,000 (sec.)
Electronic shutter	1/60 (OFF), 1/100 (FL), 1/250, 1/500, 1/1000, 1/2000, 1/5000, 1/10,000, 1/100,000 (sec.)	1/50 (OFF), 1/120 (FL), 1/250, 1/500, 1/1000, 1/2000, 1/5000, 1/10,000, 1/100,000 (sec.)
AGC	ON:5~50dB(HI), 5~32dB(LO) / OFF:5dB	
Gamma correction	ON: $\gamma \approx 0.45$ / OFF: $\gamma = 1.0$	
Video level	Video	
Back light compensation	ON / OFF	
Power supply	DC+12V ± 10%	
Power consumption	1.92W (160mA)	
Operating temperature	-10°C ~ +40°C	
Storage temperature	-30°C ~ +70°C	
Operating/Storage humidity	95%RH or less (w/o condensation)	
Lens mount	CS	
Mass	25g	
Accessories	Cable w/ connector, Hex. wrench	

Dimensions (mm)



HD Camera  
Day & Night  
Color  
Monochrome  
Board  
Accessory/Lens  
Technical Tips  
Quick Ref  
Company Info