

WAT-240E (G3.8) 1/4" Miniature Color camera

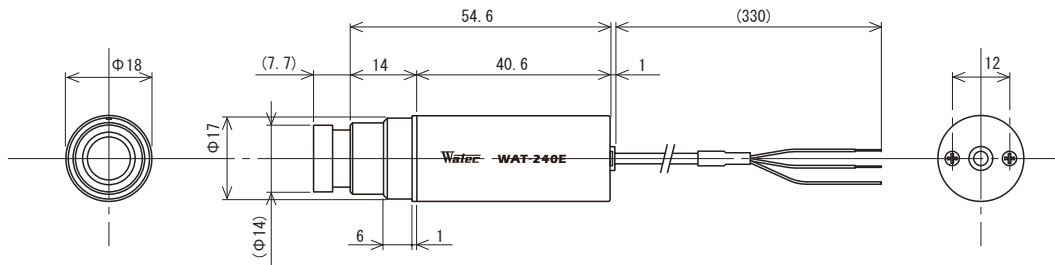
Improved resolution of 480TVL with sensitivity 0.3 lx F2.0



Key features

- Versatile use for limited space, general surveillance, embedded system and part of image processing system
- AWB, Electric Iris, AGC and BLC
- Various Optional M12 lenses available

Dimensions



Specifications

Video standard	NTSC	PAL
Pick-up element	1/4 inch CMOS image sensor	
Number of total pixels	652(H) × 504(V)	
Number of effective pixels	648(H) × 488(V)	
Unit cell size	5.6 μm × 5.6 μm	
Imaging system	RGB primary color bayer arrangement mosaic filters on chip	
Synchronizing system	Internal	
Scanning system	Progressive	
Video output	Composite video, 1.0 V(p-p), 75 Ω (Unbalanced)	
Resolution (H)	More than 480TVL (Center)	
Minimum illumination	0.3lx F2.0 (AGC ON=42dB)	
S/N	More than 52dB (AGC=0dB, γ=1.0)	
AE mode	1/60 - 1/100000 sec.	1/50 - 1/100000 sec.
White balance	ATW (2500K - 9000K)	
AGC	0 - 42dB	
Gamma characteristics	γ ≈ 0.45	
Video level	85IRE	
Back light compensation	ON	
Power supply	DC+4.6V - 6.6V	
Power consumption	0.66W / 110mA (6V)	
Operating temperature	-10 - +50°C	
Storage temperature	-30 - +70°C	
Operating / Storage humidity	95% RH or less (Without condensation)	
Lens mount	M12 P=0.5	
Standard lens	3820BC-12 (f3.8 F2.0)	
Cable length	330mm	
Weight	Approx. 23g	
Accessories	Camera holder	

Accessories Options

Miniature lenses



1920BC-12



2520BC-12



2920BC-12



3820BC-12
(Standard)



0625BC-12



0820BC-12



1220BC-12



2540EX014-M12

WAT-240E (G3.8)



VIDEO OUT

POWER IN (DC6V)

Extenders



EX005-M12-2

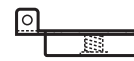


EX010-M12-2

Ring holder



Holder



H002

Stand



MS50